

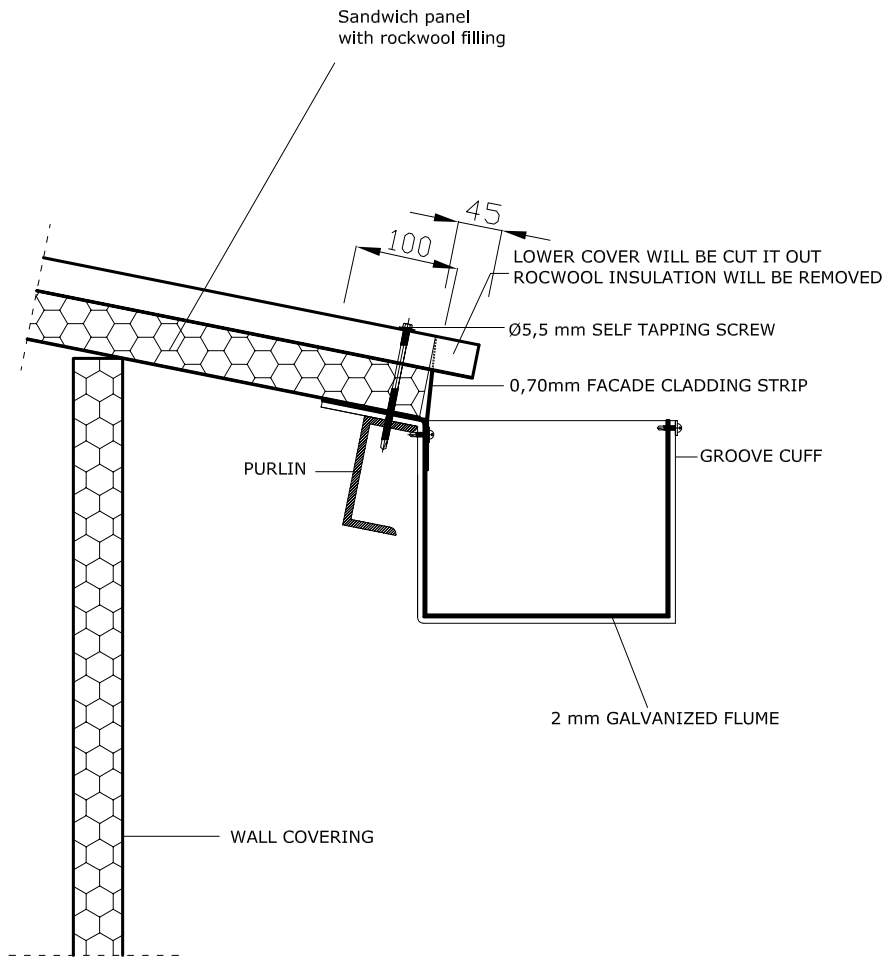
# SANDWICH PANEL INSTALLATION DETAILS



Page no:

1/4

## 1-1 DETAIL



### ALTERNATIVE 2: PANEL EDGE WITH DROPPER

NOTE: SELF TAPPING SCREW WILL BE Ø5,5mm and 12mm DRILL POINT

\* Details are intened for information and suggestion and may vary depending on project.