

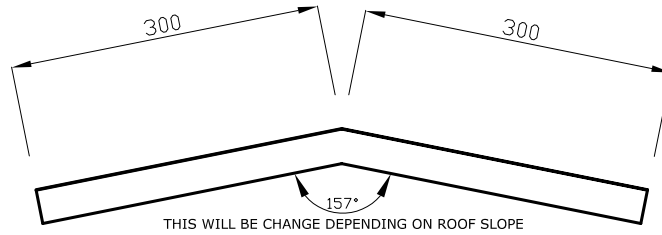
# SANDWICH PANEL INSTALLATION DETAILS



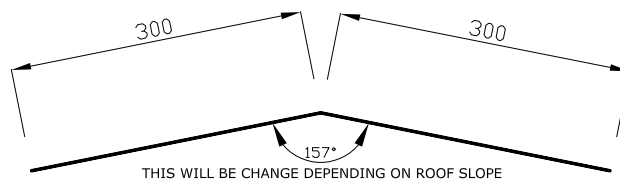
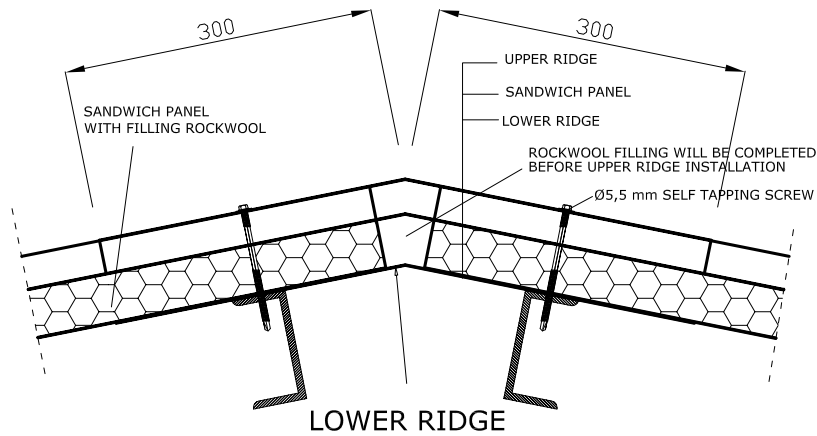
Page no:

1/6

## 2-2 DETAIL



UPPER RIDGE



LOWER RIDGE

NOTE: SELF TAPPING SCREW WILL BE Ø5,5mm and 12mm DRILL POINT

\* Details are intended for information and suggestion and may vary depending on project.