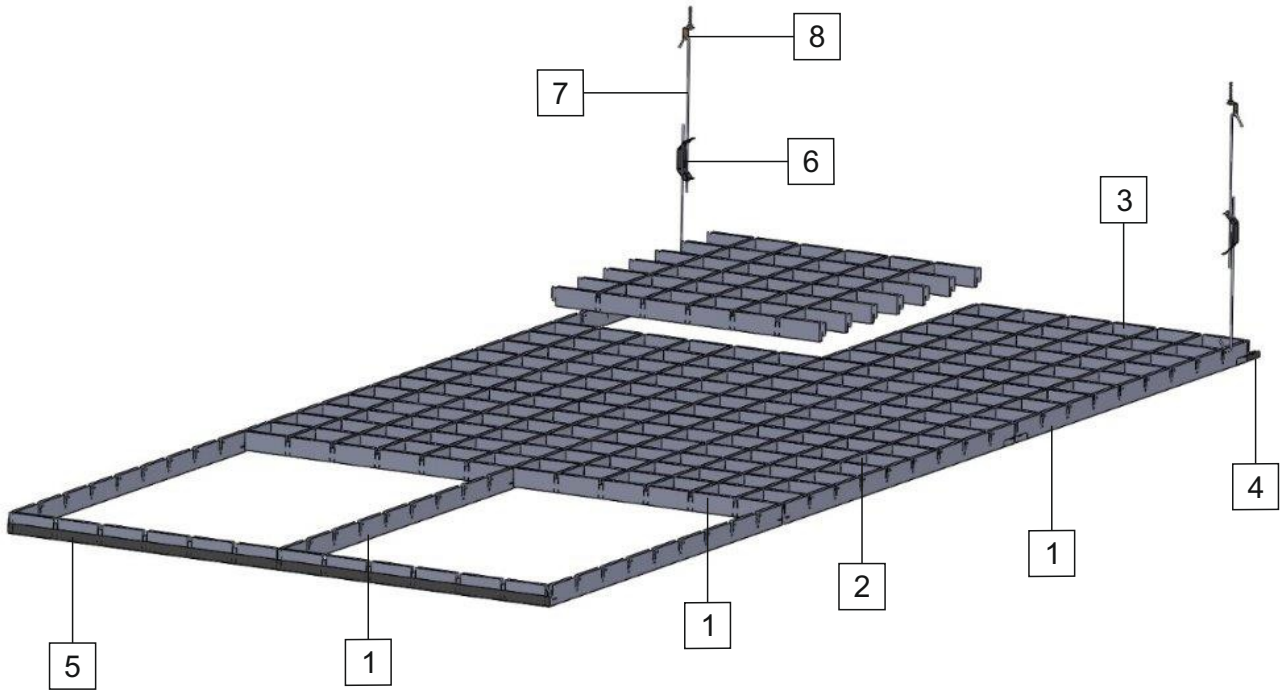




SEPA

SEPA ALÜMİNYUM ve METAL SAN.TİC.A.Ş.

SEPA T10 PETEK SİSTEM TEKNİK ŞARTNAME (2019.09) (Sepa T10 Open Cell Ceiling Systems Technical Document)



1- PETEK T10 600/1200/1800 Ana Taşıyıcı
(Open Cell Ceiling Systems 600/1200/1800mm Main Carrier)

2- PETEK T10 DIŞI PANEL
(Open Cell Ceiling Systems T10 Female Panel)

3- PETEK T10 ERKEK PANEL
(Open Cell Ceiling Systems T10 Male Panel)

4- PETEK T10 ANA TAŞIYICI EK PARÇASI
(Open Cell Ceiling Systems Main Carrier Splice)

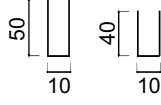
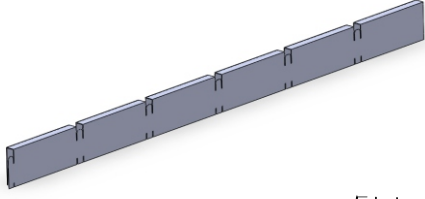
5- KENAR L
(Edge L)

6- ÇİFTLİ ASKI YAYI (Spring Clips)

7- ASKI TELİ (Hanger Wire)

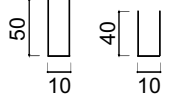
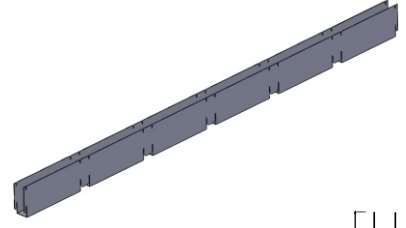
8- ÇELİK DÜBEL (Steel Anchor)

1 PETEK T10 600/1200/1800mm ANA TAŞIYICI
(Open Cell Ceiling Systems 600,1200,1800mm Main Carrier)



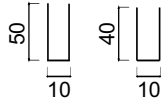
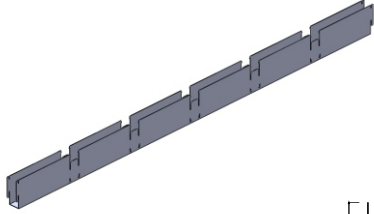
Hammadde-Material	Alüminyum-Aluminium Sac isteğe bağlı (Glv. steel on request)
Kalınlık-Thickness	0,40 mm
EnxBoy WidthxLenght	600/1200/1800mm
Renk-Color	Stok { Ral 9005 Siyah/Black Ral 9006 Gri/Grey Ral 9016 Beyaz/White } İsteğe bağlı renk üretimi (Optional color production)

2 PETEK T10 DİŞİ PANEL
(Open Cell Ceiling Systems T10 Female Panel)



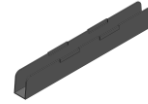
Hammadde-Material	Alüminyum-Aluminium Sac isteğe bağlı (Glv. steel on request)
Kalınlık-Thickness	0,40 mm
EnxBoy WidthxLenght	Standart boyutlar 600x600 (Standard dimensions) Diğer boyutlar isteğe bağlı (Other size optional)
Renk-Color	Stok { Ral 9005 Siyah/Black Ral 9006 Gri/Grey Ral 9016 Beyaz/White } İsteğe bağlı renk üretimi (Optional color production)

3 PETEK T10 ERKEK PANEL
(Open Cell Ceiling Systems T10 Male Panel)



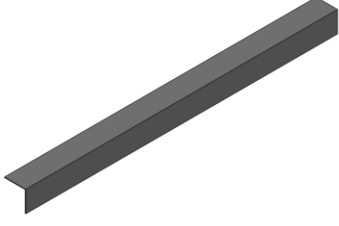
Hammadde-Material	Alüminyum-Aluminium Sac isteğe bağlı (Glv. steel on request)
Kalınlık-Thickness	0,40 mm
EnxBoy WidthxLenght	Standart boyutlar 600x600 (Standard dimensions) Diğer boyutlar isteğe bağlı (Other size optional)
Renk-Color	Stok { Ral 9005 Siyah/Black Ral 9006 Gri/Grey Ral 9016 Beyaz/White } İsteğe bağlı renk üretimi (Optional color production)

4 PETEK T10 ANA TAŞIYICI EK PARÇASI
(Open Cell Ceiling Systems Main Carrier Splice)



Hammadde-Material	Alüminyum-Aluminium
Kalınlık-Thickness	0,40 mm
Boy-Length	90 mm
Renk-Color	Stok { Ral 9005 Siyah/Black Ral 9006 Gri/Grey Ral 9016 Beyaz/White }

5 KENAR L
(Edge L)



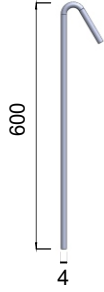
Hammadde-Material	Sac-Glv. steel
Boy-Length	3000mm
Renk-Color	Stok (Stock) { Ral 9005 Siyah/Black Ral 9006 Gri/Grey Ral 9016 Beyaz/White } İsteğe bağlı renk üretimi (Optional color production)

6 ÇİFT ASKI YAYI
(Spring Clips)



Hammadde-Material	Çelik-Glv. steel
Kalınlık-Thickness	0,50 mm

7 ASKI TELİ
(Hanger Wire)



Hammadde-Material	Sac-Glv. Steel
En-Width	Q4
Boy-Length	600 mm İsteğe bağlı boy üretimi (Optional length production)

8 ÇELİK DÜBEL
(Steel Anchor)



Hammadde-Material	Çelik/Glv. Steel
Kalınlık-Thickness	M6
Boy-Length	45 mm